



THE BEST-RUN E-BUSINESSES RUN SAP



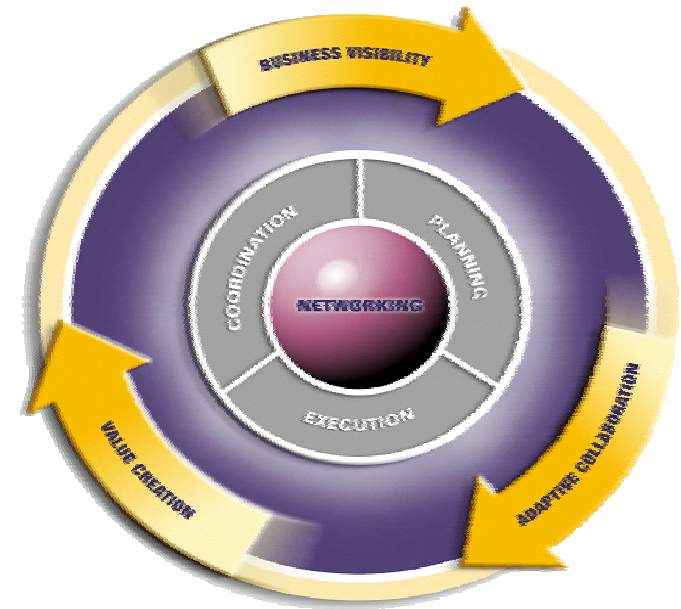
mySAP SCM



SAP Korea SCM

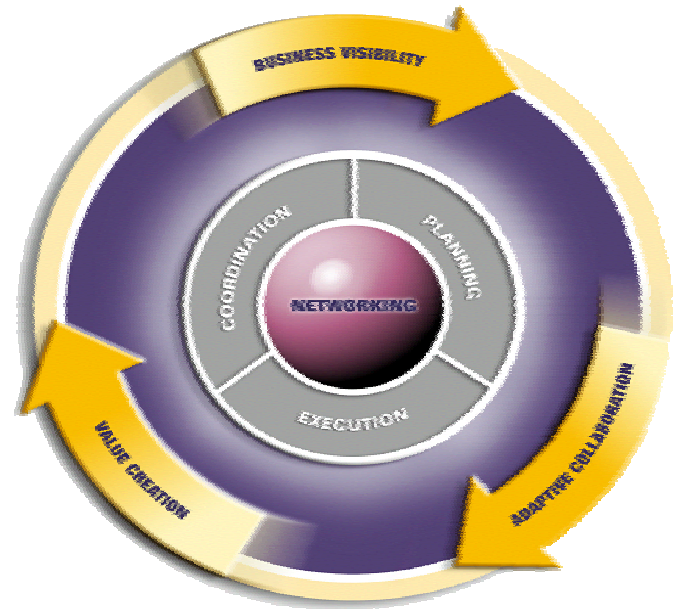
..... A G E N D A

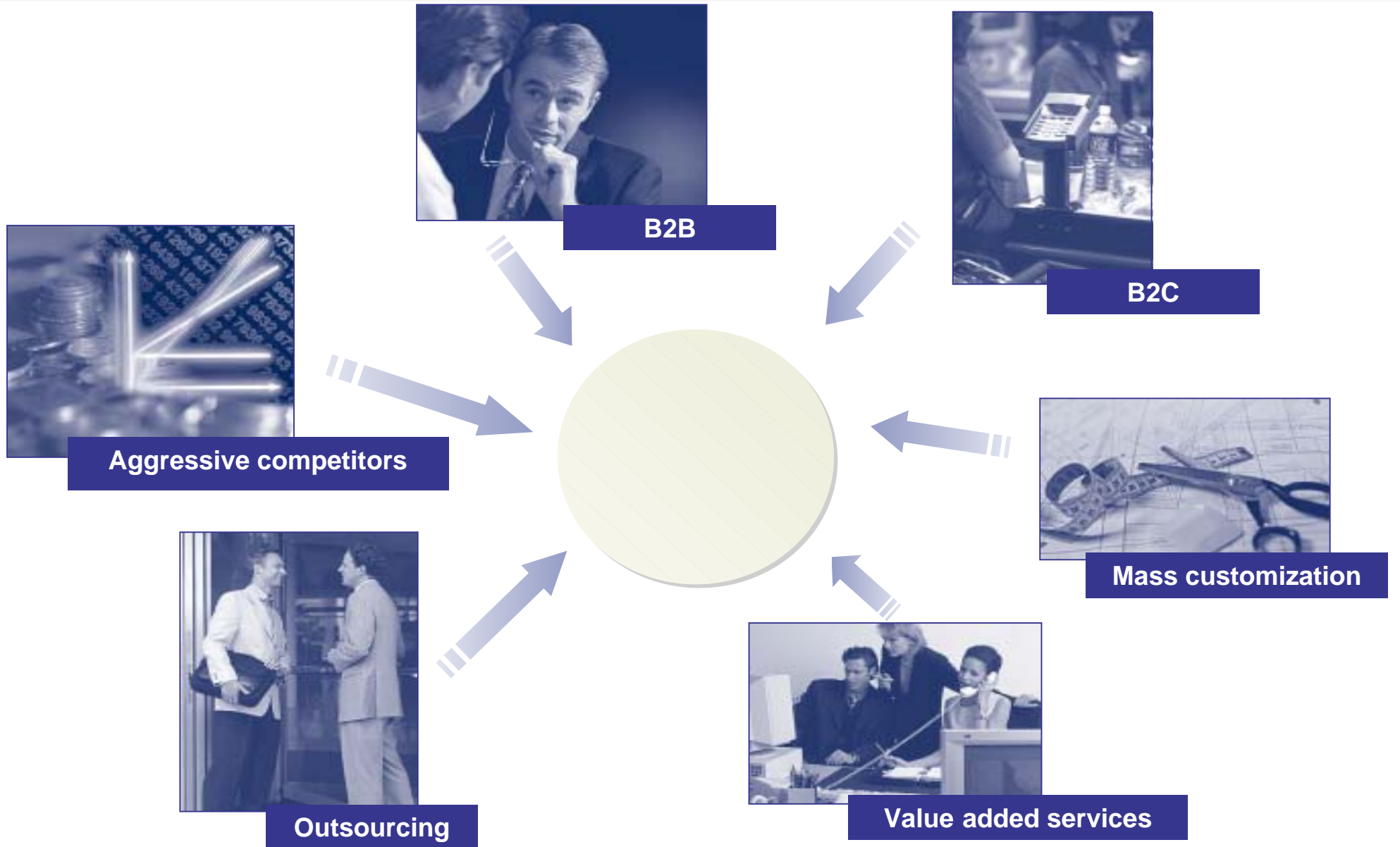
- **SCM**
- **mySAP SCM**
-

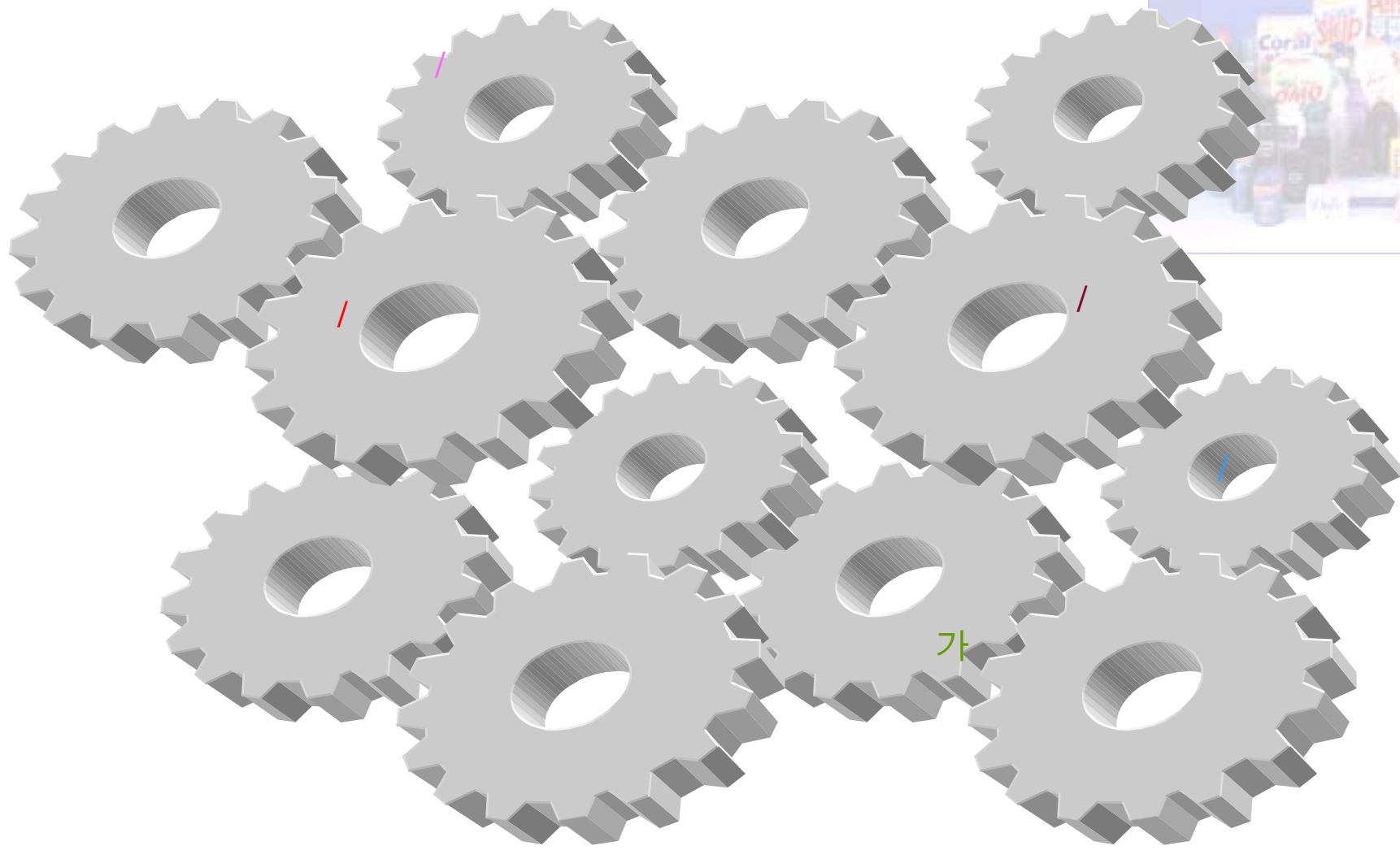


..... A G E N D A

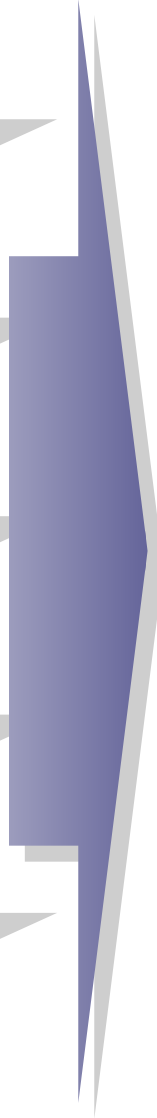
- **SCM**
- **mySAP SCM**
-







-
- ,
-
- , SKU
- / / /
- 3 가, 4
- VMI(Vendor Managed Inventory)
- /
- /
- , ,
- /



가
가
가
• / 가
•
•
•
•

[Redacted]

-
-
-
-
-

가

[Redacted]

-
-
-
-
-
-
-
-

가

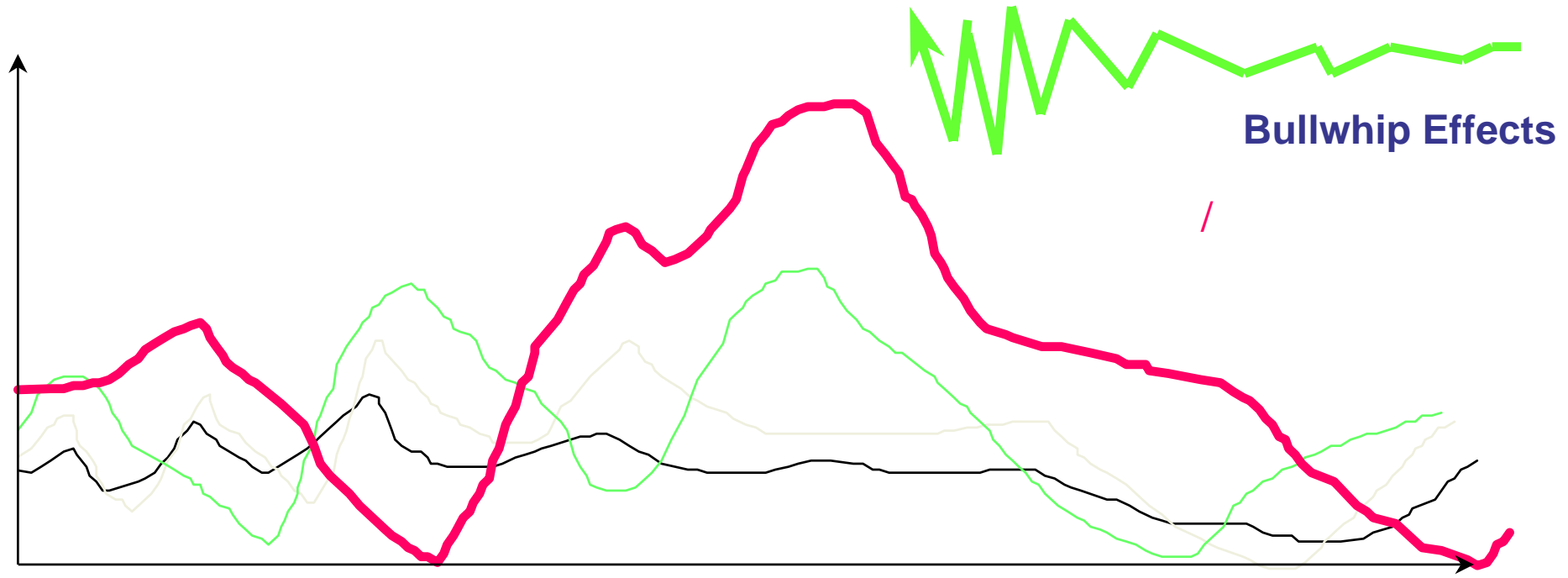
,

,

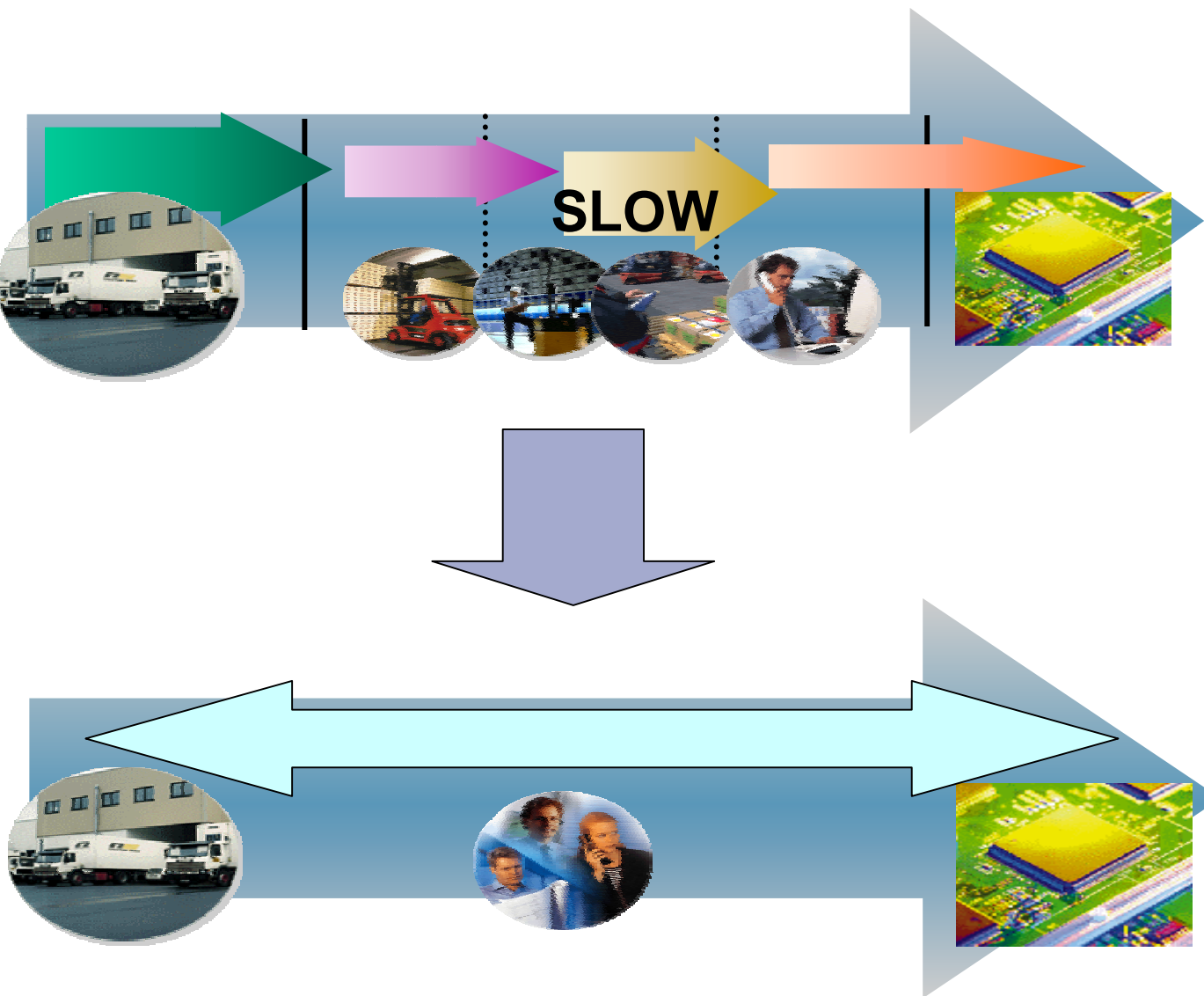
가

가

가



* 가 (Bullwhip effect):

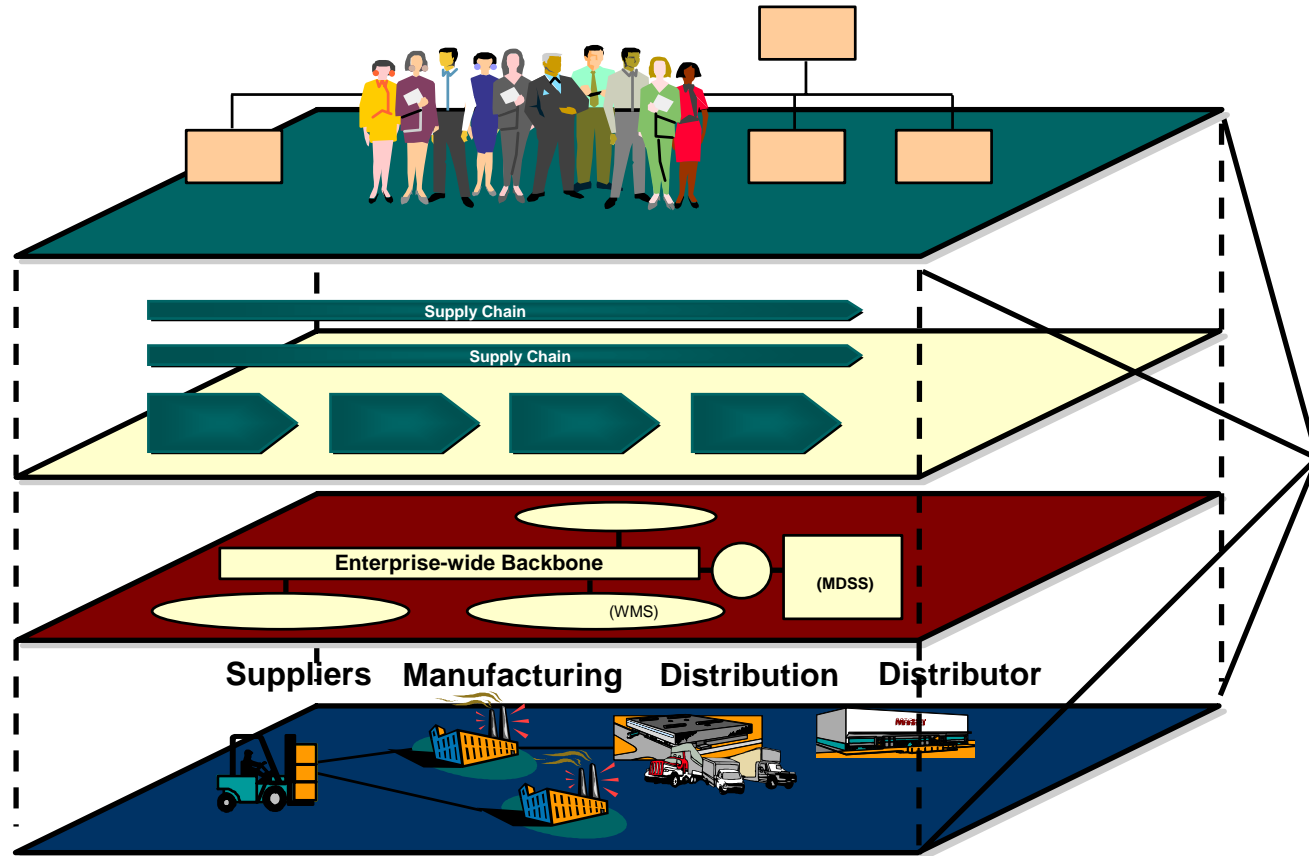


Supply Chain

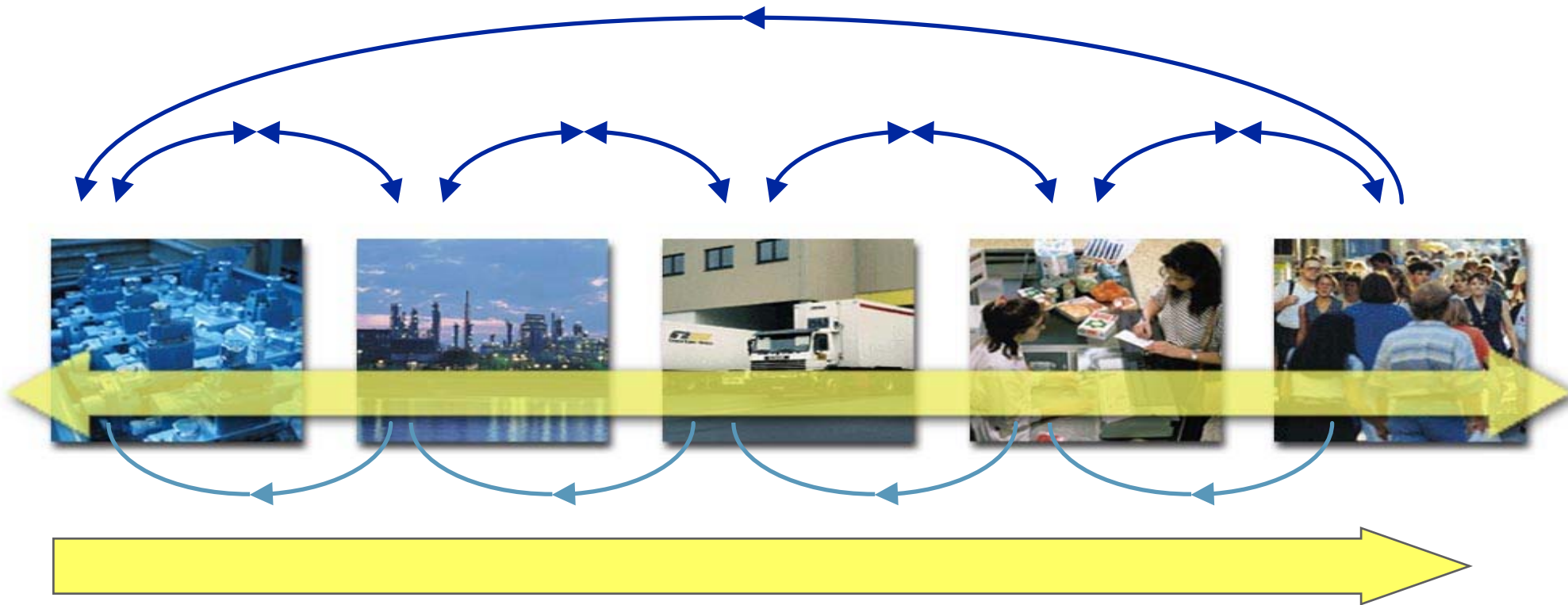
Supply Chain

Supply Chain

Supply Chain



Supply Chain Management



Global Supply Chain

Supply Chain

		Impact			
				가	
		↑	↑	↑	↑
		↓	↑	↓	↑
		↓	↑	↑	↓
		↓	↓	↑	↑
		↑	↓	↓	↓

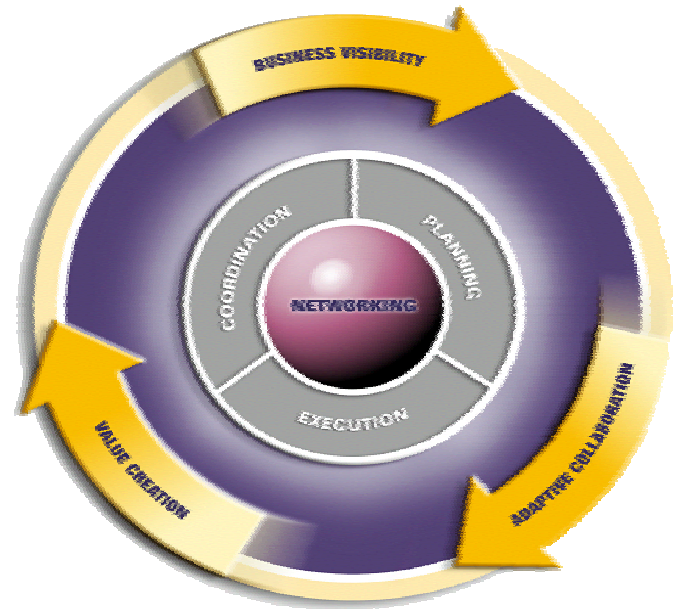
Typical Quantified Benefits from Integrating the Supply Chain

Delivery Performance	16% – 28% Improvement
Inventory Reduction	25% – 60% Improvement
Fulfillment Cycle Time	30% – 50% Improvement
Forecast Accuracy	25% – 80% Improvement
Overall Productivity	10% – 16% Improvement
Lower supply chain Costs	25% – 50% Improvement
Fill Rates	20% – 30% Improvement
Improved Capacity Realization	10% – 20% Improvement

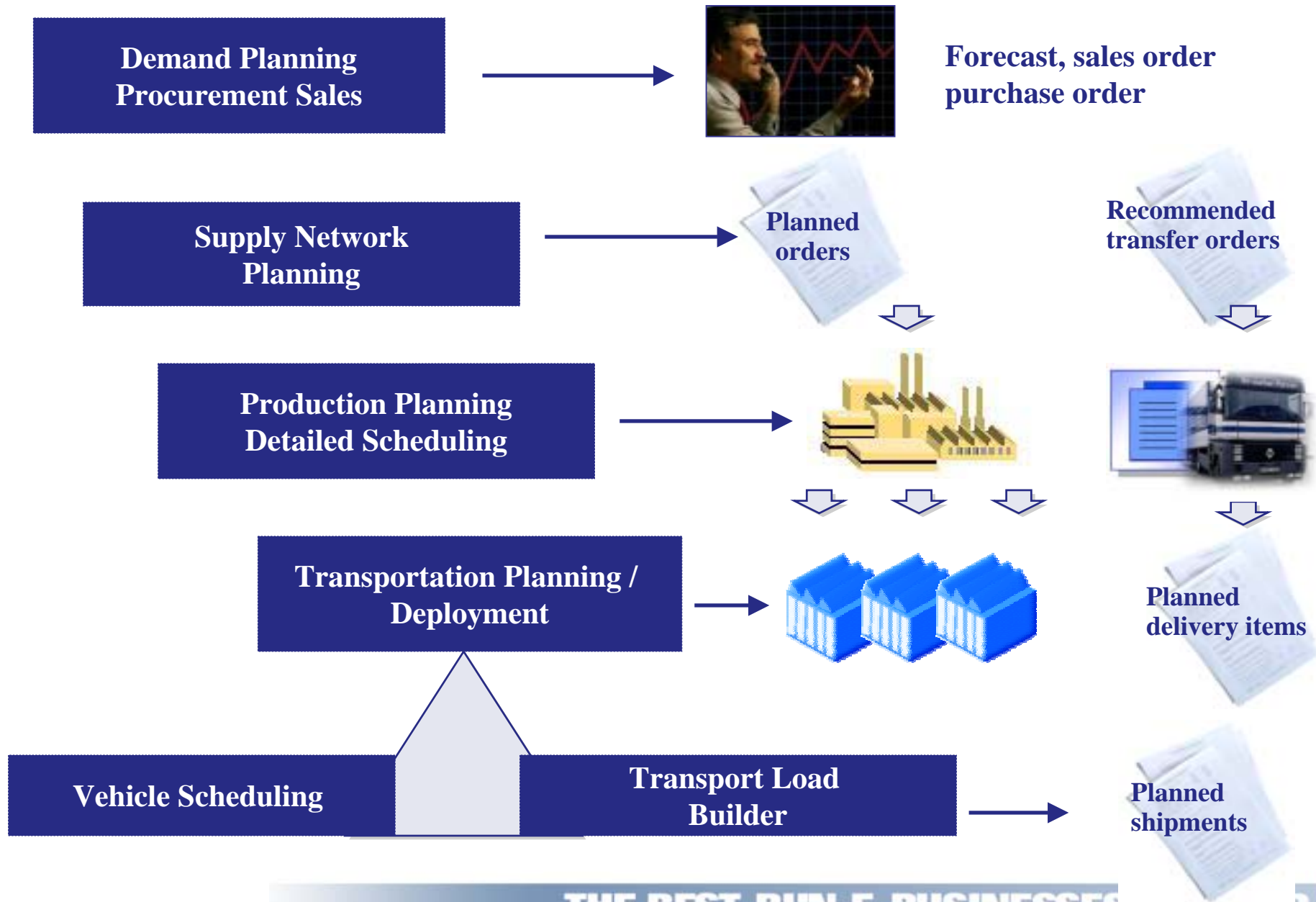
: PRTM ISC Benchmark Study

..... A G E N D A

- SCM
- mySAP SCM
-

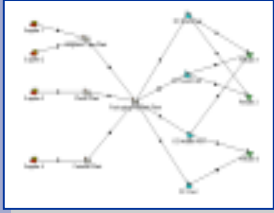


From Planning to Execution



The SAP SCM Image Diagram

Planning and Optimization



Supply Network Planning

- Business planning & simulation
- Business consolidation



Demand Forecast

Transportation Management



SAP LES



Warehouse Management



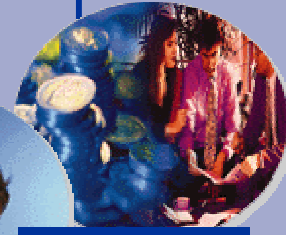
Purchasing



Production

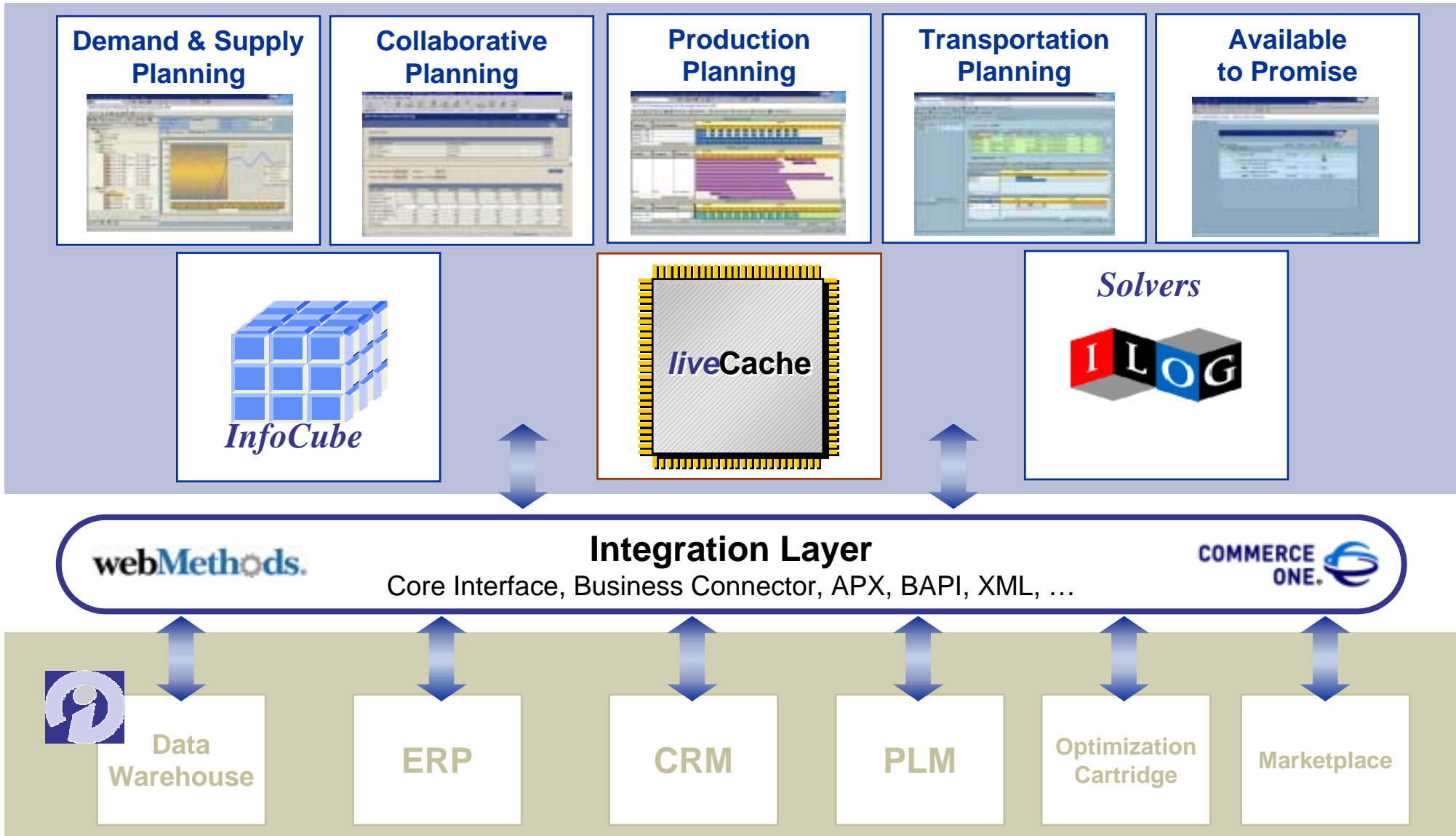


Sales



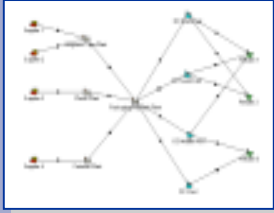
Business Processes

The SAP SCM



SAP APO in Supply Chain Management

Planning and Optimization



Supply Network Planning

- Business planning & simulation
- Business consolidation



Demand Forecast

Transportation Management



SAP LES



Warehouse Management



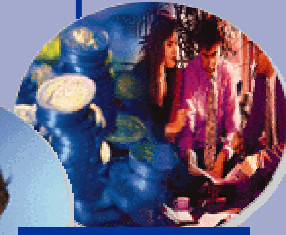
Purchasing



Production



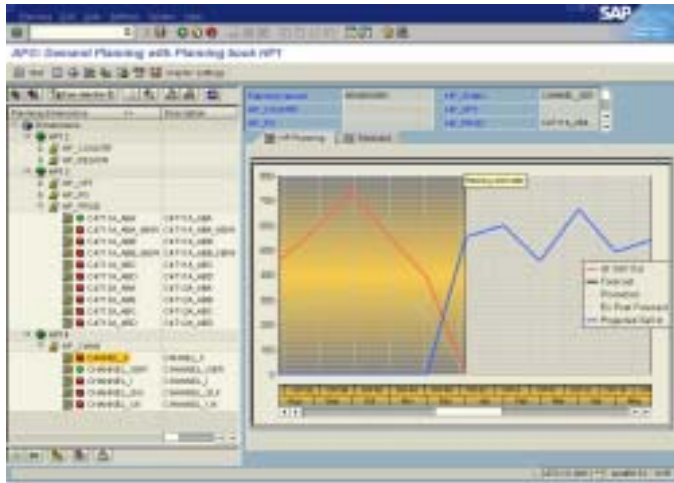
Sales



Business Processes

Demand and Supply Planning

, / ROA
/ :()



- Statistical Forecasting
- Multi-Level Planning
- Promotion Planning
- Life Cycle Management
- Constrained DRP/MPS

- Internal Demand Coll.
- Sales & Operations Pl.
- VMI
- CPFR

Supply

&



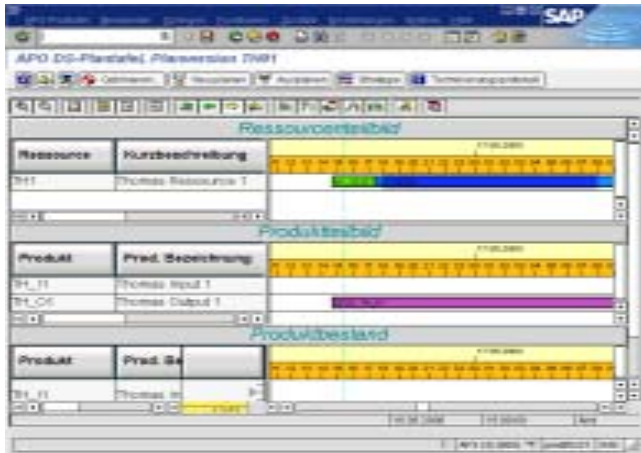
Demand

/

Manufacturing

Sequence)

(Optimal Production
(Production Plan)

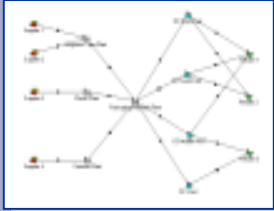


- Repetitive Manufacturing
- Production Campaign Pl.
- Process Manufacturing
- Assemble Manufacturing
- Sequencing Optimization
- Production Control

- JIT
- Kanban
- Coll. Manufacturing

SAP LES in Supply Chain Management

Planning and Optimization



- Business planning & simulation
- Business consolidation



Demand Forecast

Supply Network Planning

Transportation Management



SAP LES



Warehouse Management



Purchasing



Production



Sales



Business Processes

Order Fulfillment

,

,

■



- Global ATP/CTP
- Backorder Rescheduling
- Deployment
- Vehicle Scheduling
- Load Building
- Transportation Execution
- Warehouse Mgmt

- Coll. Transportation Pl.
- Tendering with Carriers
- Order Visibility

SAP LES : Key Initiatives

- **Transportation Planning (SAP LES 4.6C / SAP APO 3.0)**
- **Radio Frequency (4.6B, 4.6C)**
- **Handling Unit Management (4.6C)**
- **Internet Services (4.6B, 4.6C)**
- **Operational Decision Support (BW 2.0)**
- **Tracking (additional functions after 4.6C)**
- **Task & Resource Management (after 4.6C)**
- **Yard Management (after 4.6C)**



SAP LES: Solution for Radio Frequency Control

"Ready-to-use" solution -

no further customizing is required

RF terminals communicate data directly

to the SAP System

Graphical and character RF terminals

based on a common design

**Execution of individual functions by using
pushbuttons on a touch screen or function
keys on a character-based device**

**Scanning information by using a combined
bar code (e.g. EAN128) for transferring
information and verifying data**

Hardware-independent RF functionality



Covered Business Processes - Overview

Warehouse



Unloading

Unpacking

Putaway

Interleaving

Replenishment

Picking

Packing

Loading

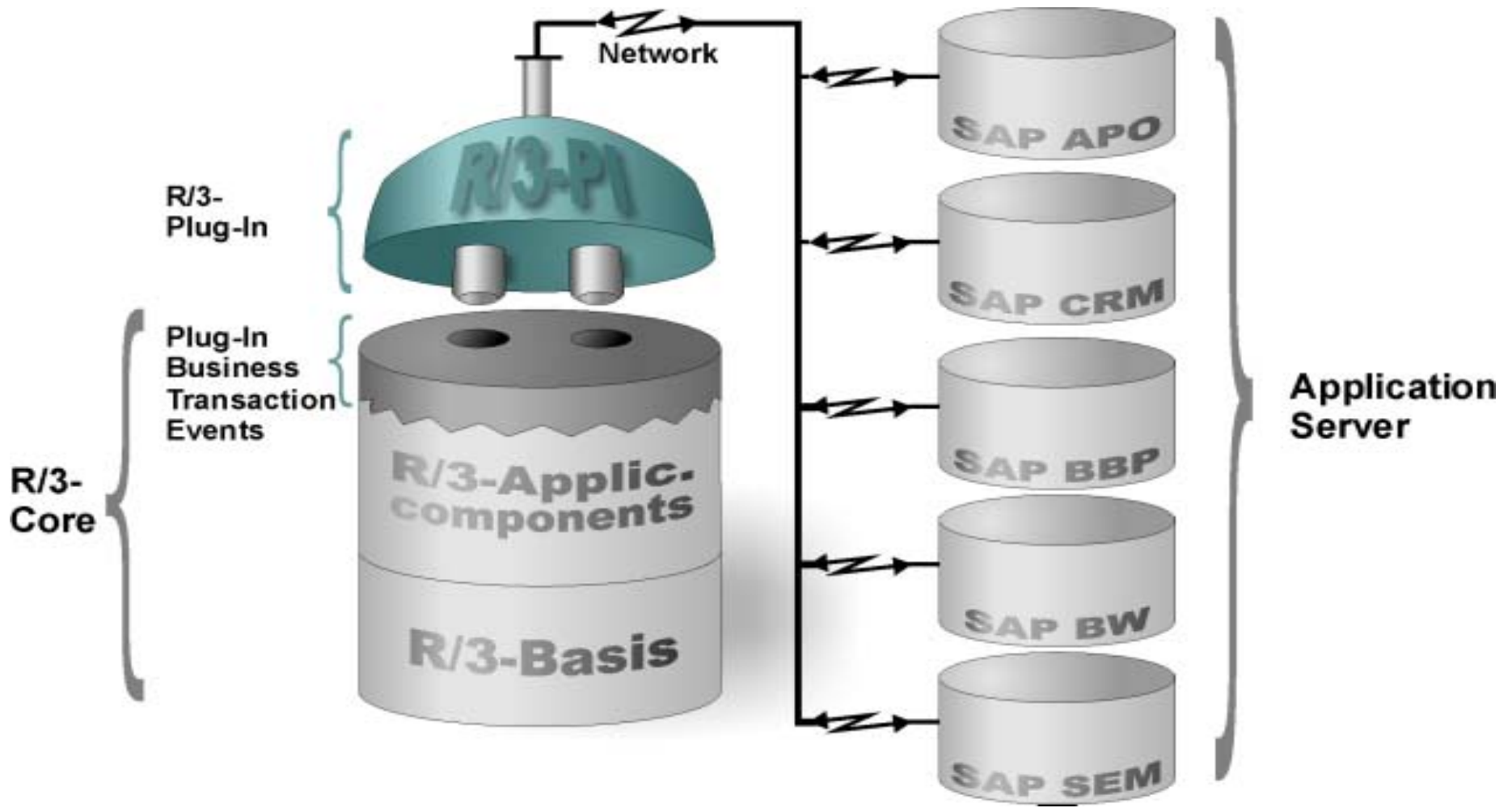


Delivery Split
Printing Labels

Inventory

Inquiry

Shipment Update



mySAP SCM

versus

..

Solution

versus

Solution

SAP integration by design

versus

**Some R/3 integration via generic
middleware**

**Flexibility through templates and
cartridges**

versus

Large number of modules

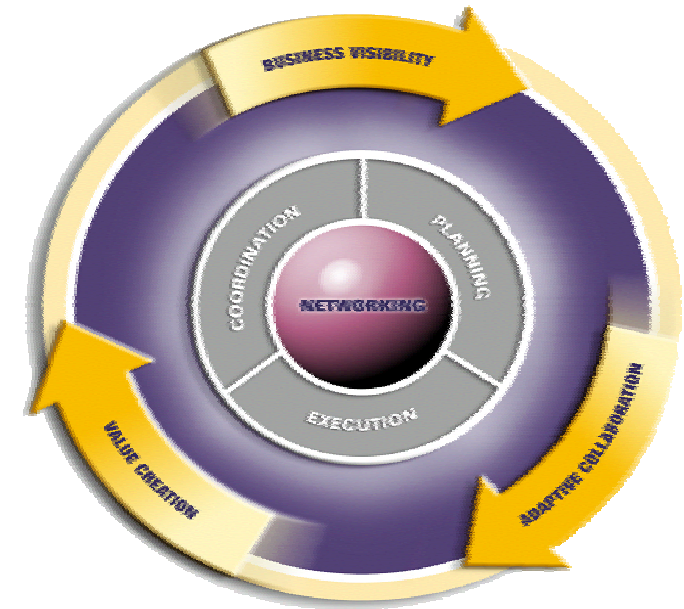
Unified eSCM Hub architecture

versus

**Combination of existing products
from different vendors**

..... A G E N D A

- **SCM**
- **mySAP SCM**
-





- : 2 3000 (2001)
- : / / (CPG Leader)

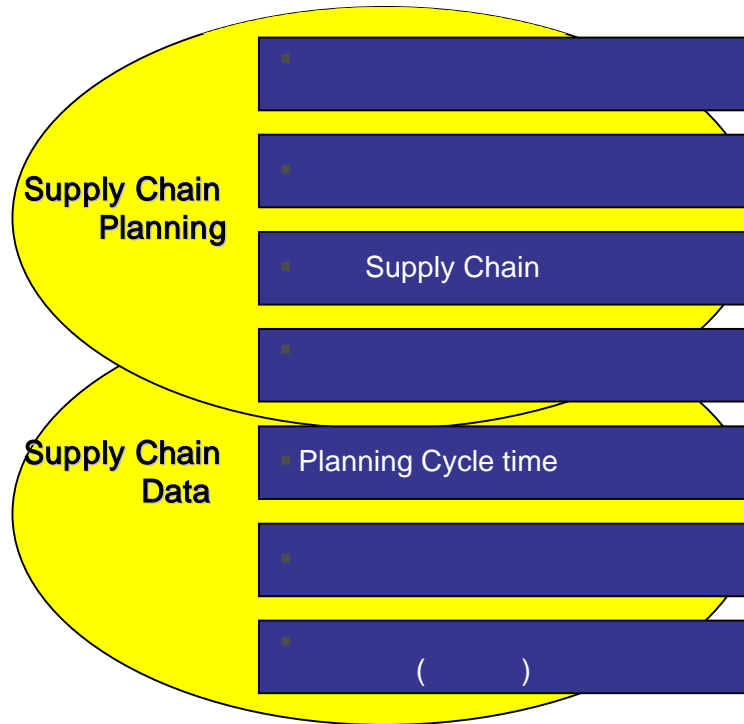
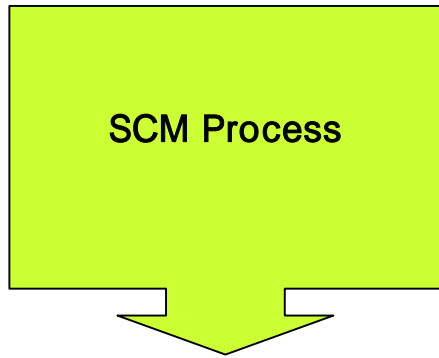


- : DNS APO
- : SCM BPR / APO (Ver 3.0A)
- : 2001 3 26 ~ 2002 4 30 (13)
- : (17) / (12)
- : APO ASAP

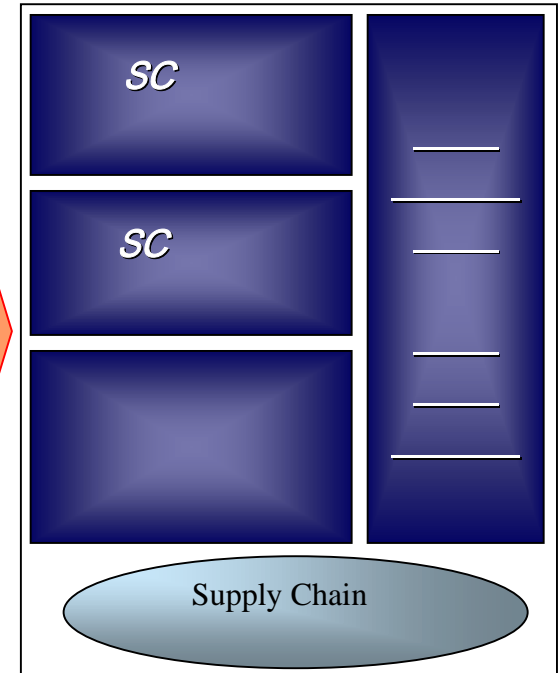
SCM To-Be Image - SCM Vision

'Supply Chain'

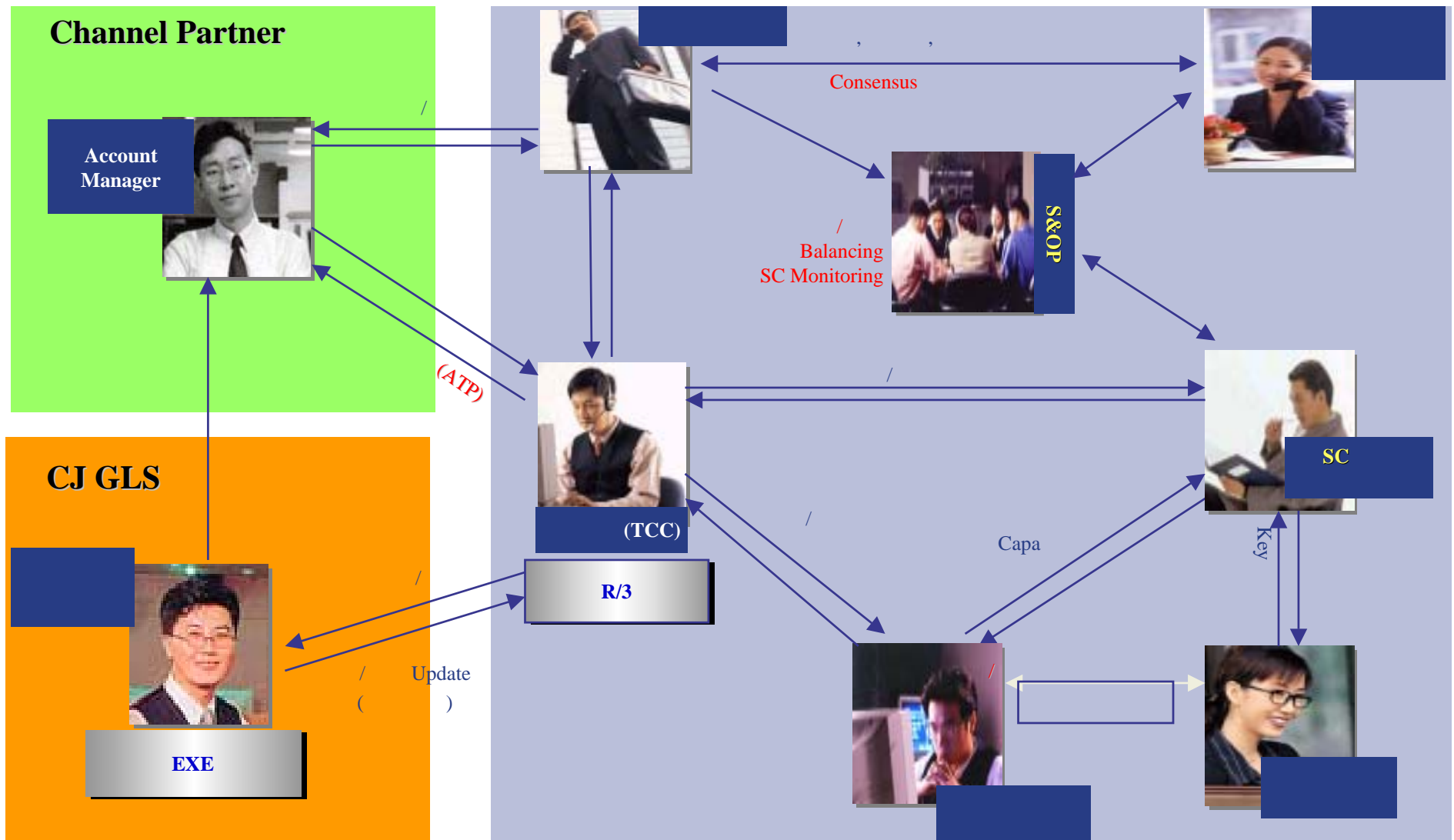
SCM Solution



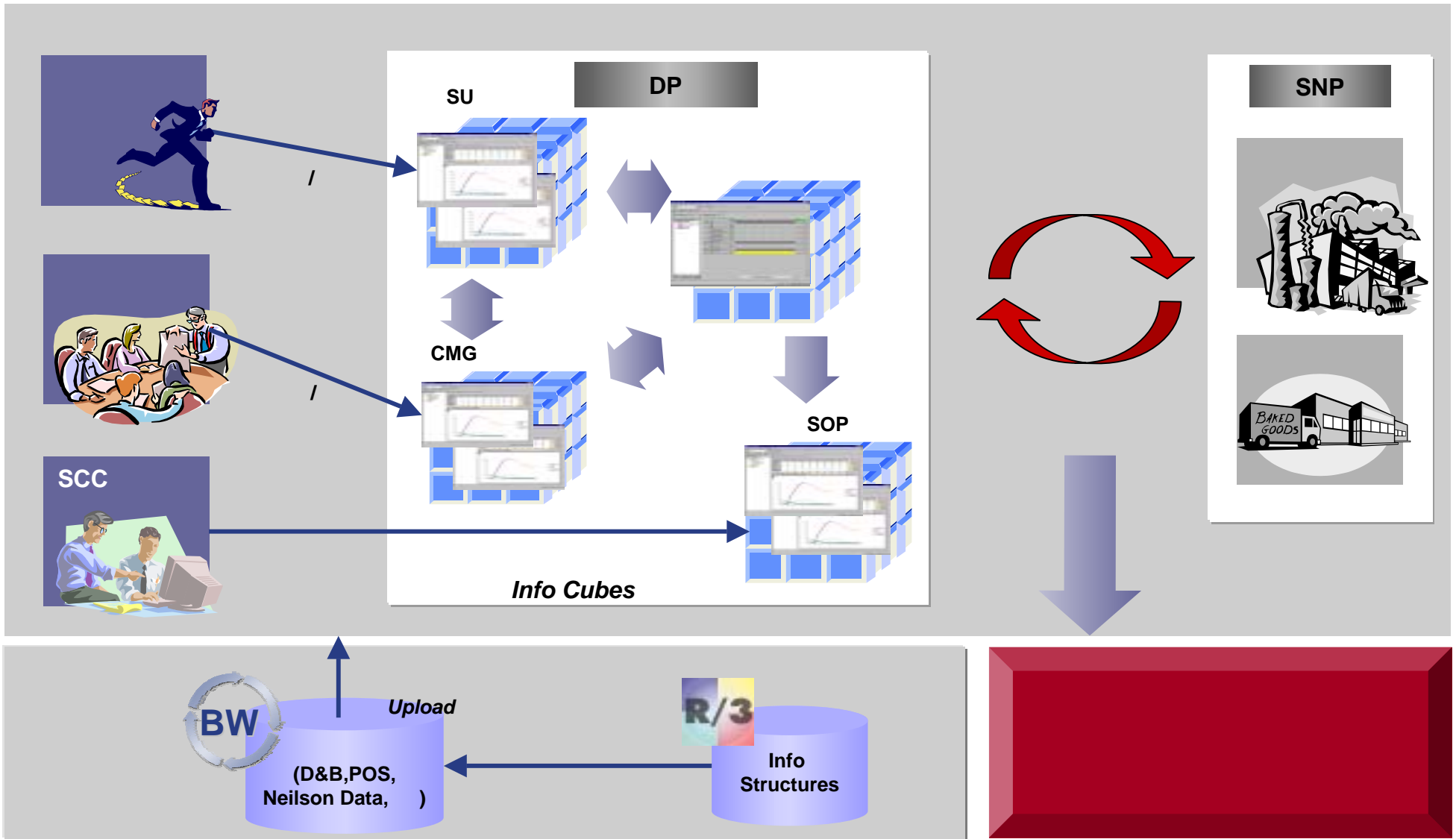
SCM VISION



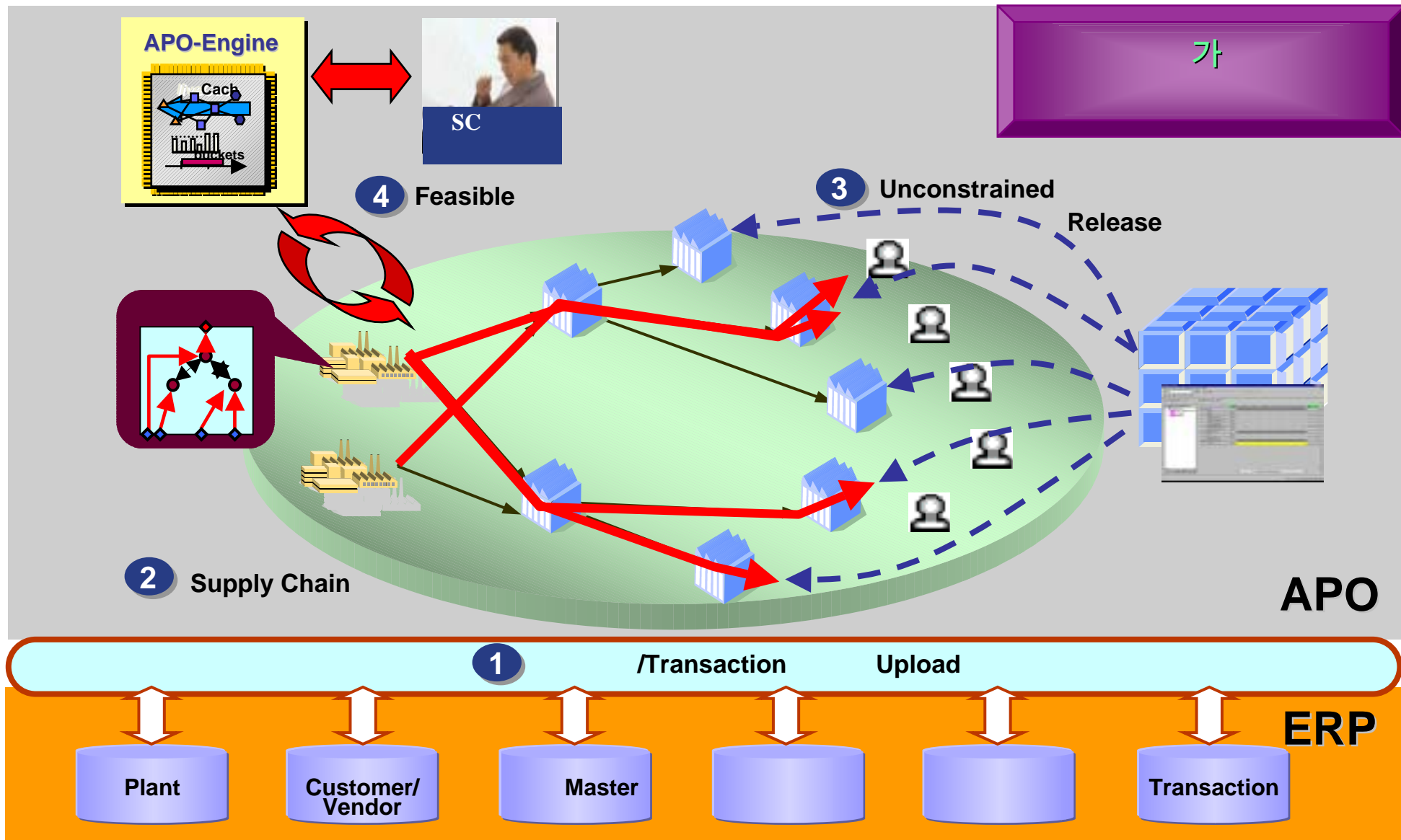
SCM To-Be Image - Key Business Process



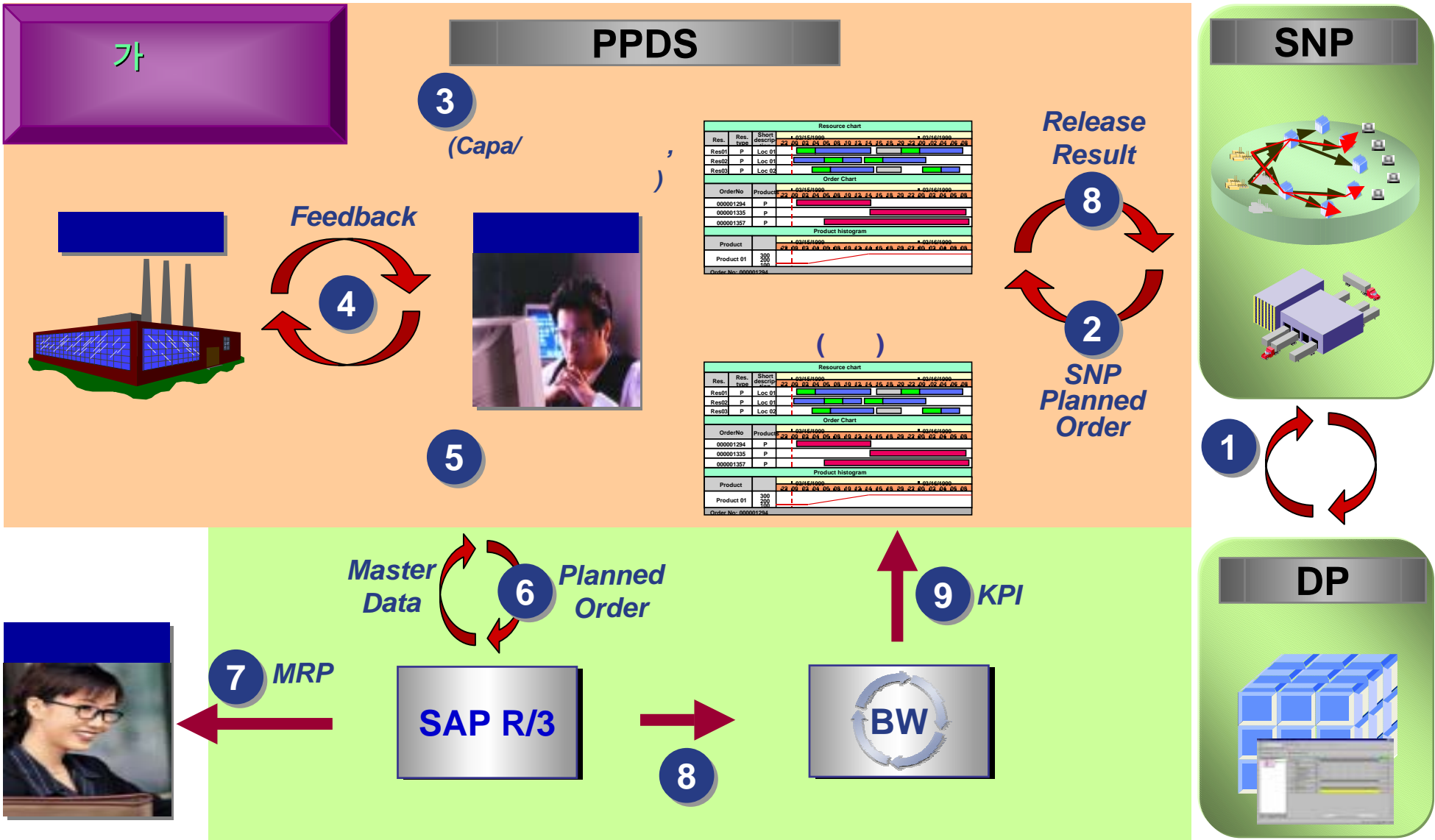
SCM To-Be Image - Demand Planning To-Be Image



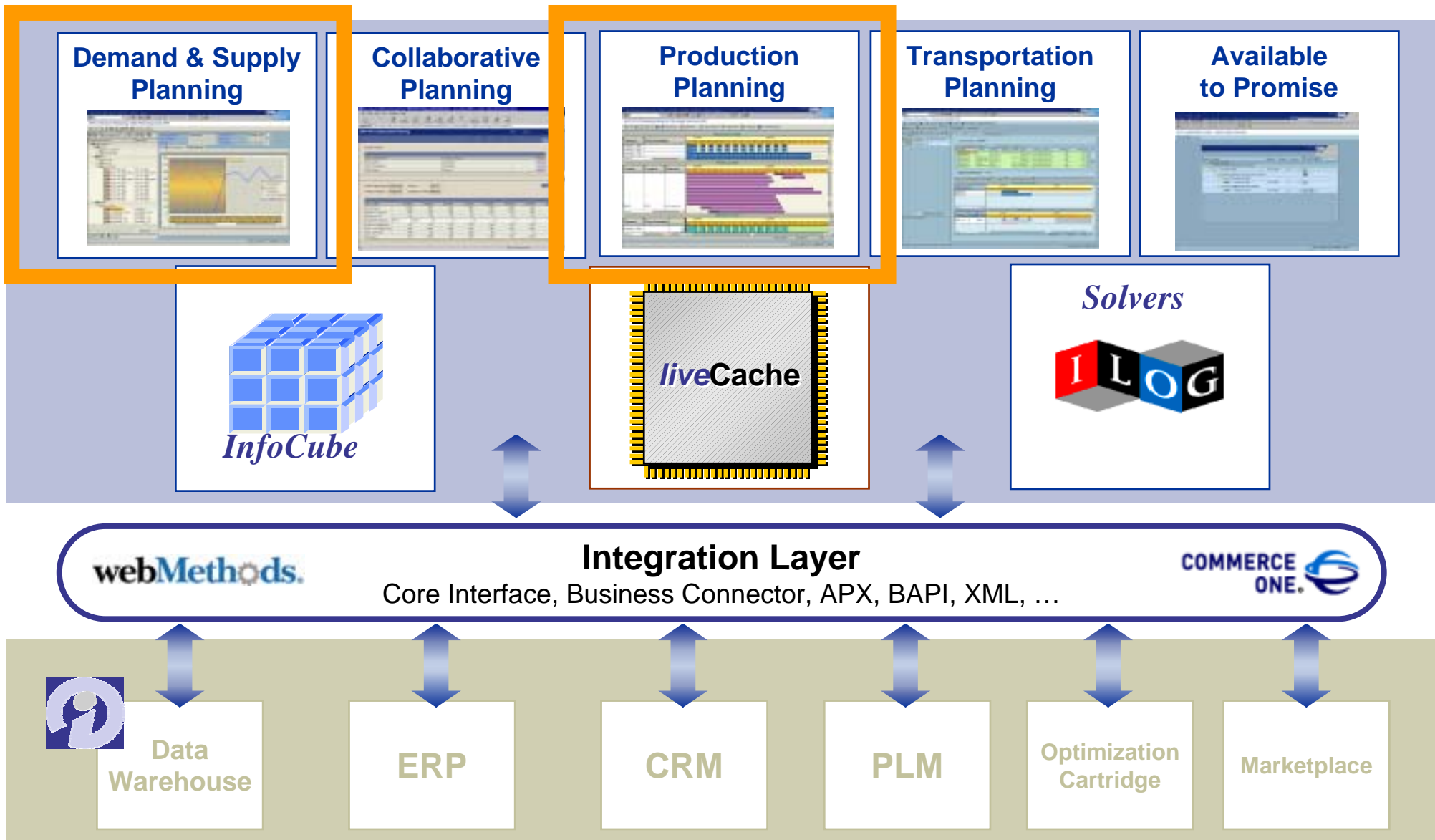
SCM To-Be Image - SNP To-Be Image



SCM To-Be Image - PP/DS To-Be Image



SCM To-Be Image -



<p>Demand Planning()</p>	<ul style="list-style-type: none"> <input type="checkbox"/> - <input type="checkbox"/> / <input type="checkbox"/> Realignment <input type="checkbox"/> One-Stop 	
<p>Supply Network Planning ()</p>	<ul style="list-style-type: none"> <input type="checkbox"/> - <input type="checkbox"/> RCCP <input type="checkbox"/> KPI <input type="checkbox"/> 가 / 가 	
<p>PP/DS ()</p>	<ul style="list-style-type: none"> <input type="checkbox"/> , <input type="checkbox"/> Line Sequencing <input type="checkbox"/> / <input type="checkbox"/> / <input type="checkbox"/> <input type="checkbox"/> <input type="checkbox"/> 	

Factor one

- **High product reliability**
 - APO 3.0A Version, more stabilization
 - High flexibility in functionality

Factor two

- **Global support , Quality Assurance Activity**
 - SCM Global Monitoring Project (3 Projects in APA)
 - Blueprint review activity by global SCM center
 - Solution Management Review activity before Go-Live

Factor three

- **Standard process adoption, No customizing**
 - Built in advanced process
 - Concurrent implementation both system and process changes

Q&A

